

# Update: Roadmap to Reopen Ontario

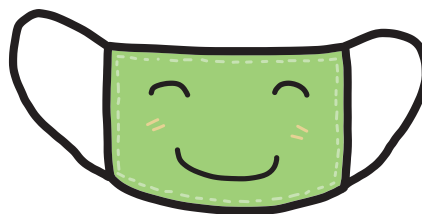
Effective March 21, 2022

**Effective Monday, March 21, 2022 at 12:01 a.m:**

- ✓ Masking requirements will be removed in most places (**including schools**) except:
  - Public transit
  - Long-term care
  - Retirement homes and other health-care settings
  - Shelters
  - Jails
  - Congregate care and living settings, including homes for individuals with developmental disabilities
  
- ✓ Other measures in schools will be lifted, including removing cohorting and daily on-site screening. Enhanced cleaning, optimizing air quality and ventilation and absence reporting **will continue**.
  
- ✓ All other regulatory requirements for businesses will be removed, including passive screening and safety plans.
  
- ✓ The province will continue providing rapid-antigen tests and personal protective equipment (PPE) to schools and businesses.



Although masking requirements are being removed in most settings, **it is strongly recommended to continue the use of masks in indoor public settings to help protect against COVID-19 infection.** This is especially true **if someone has higher personal health risks or if their close family or friends include those who are vulnerable to severe infection.**



**Renfrew County and District Health Unit**

*"Optimal Health for All in Renfrew County and District"*

[www.rcdhu.com](http://www.rcdhu.com)